

A TATA PRODUCT

For marriages crafted by you



TANISHQ
PRESENTS

RIVAĀH
WEDDING JEWELLERY



For marriages crafted by you



π
TANISHQ
PRESENTS

RIVAĀH

WEDDING JEWELLERY

ADORNING EVERY MOMENT OF YOUR STORY.

You are the ember that brightens every celebration.

You are the light that draws every eye.

Cultural curator. Detail lover. Heritage admirer.

It is you who makes every moment live beyond the festivities.

This festive season, discover jewellery that celebrates your
treasured moments.

From the richness of temple artistry,
to the intricacies of antique craftsmanship,

and the layered beauty of Kasumala,
each piece holds within it, a spark of celebration.

A collection where skilled craftsmanship and thoughtful design
unite to tell the story only you can craft.



CHOKER
O5AD2AY

HAARAM
O5AD2AL

Celebrate the festive season with bangles that glimmer and earrings that frame every smile with radiance. Each piece, inspired by the richness of South Indian artistry, carries the charm of age-old traditions with a style made for today. Worn together with the wide range of necklaces, they don't just complete your look—they make every festive moment brighter, more meaningful and unforgettable.

FESTIVE COIN DROP EARRINGS



W5C32FL



Crafted for festivities, these earrings with an antique finish, feature coin motifs and floral elements in tiered layers, finished with a graceful drop for added movement.

O4BB2GY



A pair of yellow gold temple earrings with Lakshmi motif panels, designed in the timeless Chakkri style. Their versatile detailing makes them a striking choice for special occasions.



ELEGANT NAKSHI EARRINGS



W5C12JD



Earrings with Lakshmi coin studs and openwork peacock-lotus frames, finished with Ghungroo-inspired drops that sway elegantly, perfect for a festive attire.

W5C12BR



With coin-inspired panels, central red stones and refined Nakshi work, these antique-finish earrings capture remarkable craftsmanship. Their bold yet elegant design makes them a standout for festivities.



O5C12GL



Vibrant red stones punctuate the coin motifs on these temple earrings. Their layered Nakshi detailing and a golden finish create a subtle rhythm and presence.



AN ODE TO TRADITIONAL ARTISTRY



A testament to traditional artistry, this bangle set features gold coin motifs set amidst a vibrant array of emeralds and rubies, brought together with intricate temple detailing.



BROAD BANGLE
W1D1VMJ

THIN BANGLE
W1D1VMQ

WIKPVVK

LAKSHMI NAKSHI BANGLES



Bangles featuring intricate Nakshi work and Lakshmi coin motifs, highlighted with vibrant red gemstones, adding timeless elegance to every occasion.



W2KLVDH

NAKSHI BANGLES



Crafted in Geru gold, these bangles showcase detailed Nakshi work and Lakshmi coin motifs, beautifully accented with delicate red stones for timeless allure.





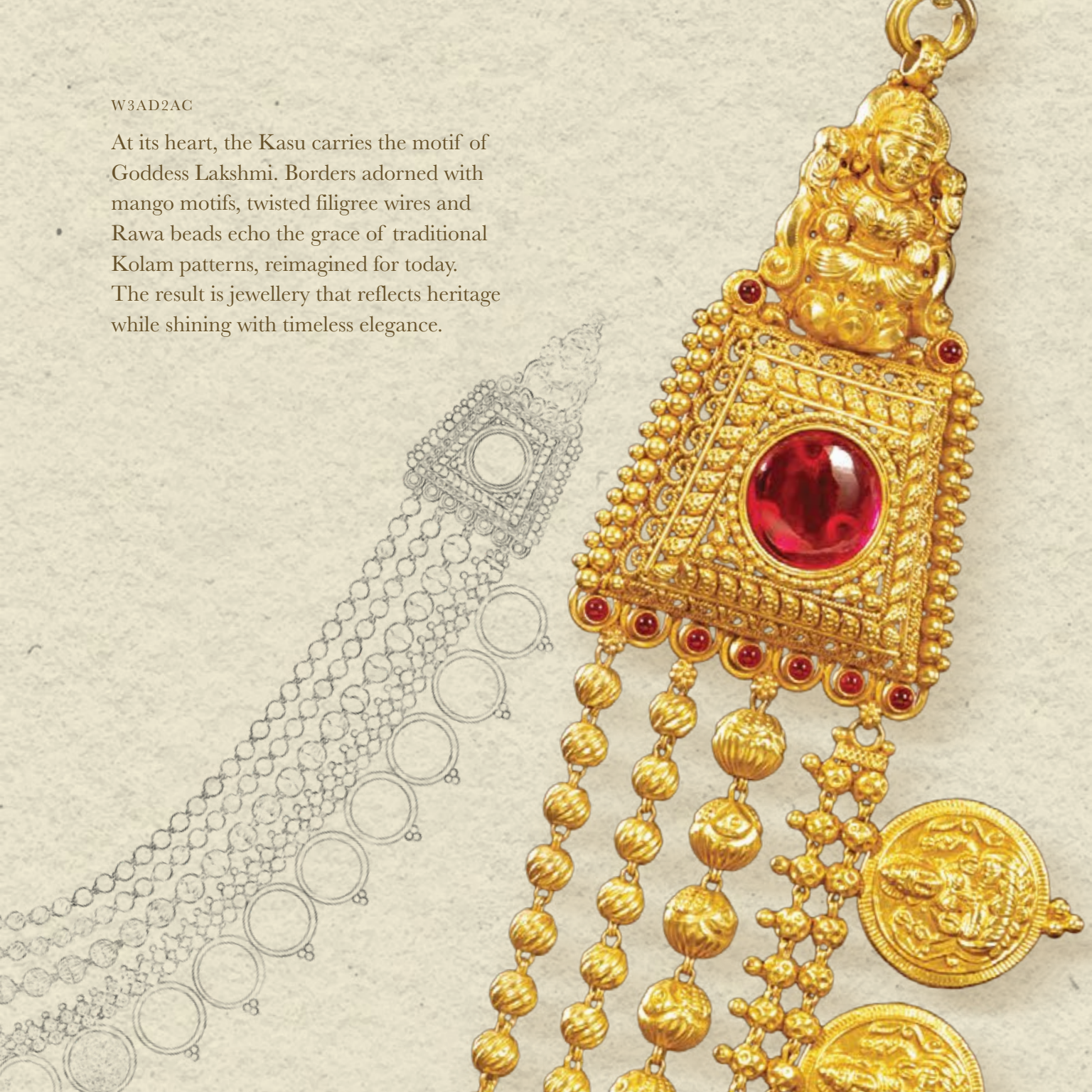
W3AD2AC

The Kasumala

The Kasumala is a testament to timeless artistry - 1080 hours of patient craftsmanship where each Kasu or coin, is shaped with care and strung into a seamless Patta. No two beads are ever alike. Every handmade rawa ball and textured bead adds its own character, making each necklace one of a kind.

W3AD2AC

At its heart, the Kasu carries the motif of Goddess Lakshmi. Borders adorned with mango motifs, twisted filigree wires and Rawa beads echo the grace of traditional Kolam patterns, reimagined for today. The result is jewellery that reflects heritage while shining with timeless elegance.





O5C12GL

KASU-INSPIRED NAKSHI NECKLACE



Twist work to add
frill like details

Three mango leaf
dangles



This short necklace is a celebration of artistry, blending a coin-inspired design with the brilliance of red stone accents. Each Kasu-like element is meticulously crafted with Nakshi detailing, where delicate patterns and miniature engravings bring depth and dimension to the gold surface.



O5C12GI

KASU COIN NECKLACE



Alternating
leaf motifs and
kasu coins

Intricately crafted
deity motif



This short yellow gold necklace showcases intricately crafted Kasu coins embossed with deities and accented by red beads. Its rounded silhouette reflects a harmonious blend of artistry and tradition.



O5AD2AZ

INTRICATE KASUMALA NECKLACE



Spire accents to
enhance the design

Lakshmi motifs for
a festive flair



A temple-inspired necklace with Kasumala coins, Lakshmi motifs, spire accents, and a dome pendant, enriched with Deepam motifs that echo South Indian artistry.



W5C12IV

FESTIVE LAKSHMI KASUMALA



Intricate coin
panel

Jhumki-inspired
features



A masterpiece in yellow gold, this temple necklace radiates grandeur with a majestic Lakshmi centrepiece, framed by cascading rows of intricately embossed coin panels. Delicate Deepam and Jhumki-inspired drops shimmer with movement, adding layers of brilliance.



NAKSHI CHOKER AND HAARAM

CHOKER
W5C12BR



A regal yellow gold Kasumala, designed with embossed coin motifs interspersed with ruby-studded floral clusters. The alternating pattern creates a rhythmic play of form and colour, blending temple artistry with refined elegance—perfect for wedding finery and festive attire.



HAARAM
W5C12BO



A cascading Kasumala in yellow gold, featuring triple rows of gold beads that flow into a symmetrical sequence of ruby-detailed coins. The layered design weaves heritage patterns into a statement silhouette, making it an heirloom-worthy jewel for grand occasions.





EVERGREEN KASU-INSPIRED CHOKER AND HAARAM

CHOKER
W5C32FK



An elegant blend of heritage and artistry, this gold choker features Lakshmi motifs and embossed coins. Detailed side panels and matching drop earrings, make it a perfect statement piece.



HAARAM
W5C32FL



This classic Kasumala Haaram is a marvel of intricate detailing. Embossed coins, adorned with delicate floral and leaf motifs, create a beautiful cascade, while matching earrings with layered drops complete this graceful set.





O5ADEBF

FESTIVE TEMPLE KASUMALA SET



Delicate
Jaali-work

Vibrant red stones
with drops



A perfect adornment for festivities, this exquisite set features a temple Kasumala with intricate Nakshi motifs, vibrant red stones, and delicate bead drops, paired with matching earrings. Echoing the glow of a radiant lamp, the ruby-studded mala in yellow gold captures temple grandeur in every detail—crafted as an heirloom for timeless occasions.



W5C12JB

LOTUS GAJALAKSHMI HAARAM



Hanging
gold beads
bunch-work

Intricately crafted
Gajalakshmi motif



This temple-inspired Haaram is crafted with cascading Kasumala coins, each bordered with delicate floral accents that soften its bold silhouette. At the center rests a resplendent lotus pendant, crowned with the divine Gajalakshmi motif. Intricate detailing outlines the necklace, while fine bunch-work of hollow gold beads adds rhythm and movement, bringing the design to life.



O5AD2BF

ORNATE TEMPLE KASUMALA



Handcrafted
kasu

Finely crafted
miniature motifs



This long Geru gold temple Kasumala is a testament to the mastery of Nakshi artistry. Each Kasu is meticulously detailed, linked with precision, and interspersed with delicate green and red stones that add festive vibrance. The ornate pendant is richly sculpted, echoing temple architecture with layers of texture and miniature motifs.



O4BB2GY

LAKSHMI PANEL TEMPLE NECKLACE



Delicate
jaali-work

Stone embellishments
for a festive look



This radiant yellow gold temple necklace is a tribute to timeless craft. Rows of layered chains flow gracefully into finely carved Lakshmi panels, each brought to life with intricate Nakshi detailing. At the centre rests a grand pendant-adorned with delicate textures and sculpted depth inspired by temple art.



W5C12JL

REGAL LAKSHMI PENDANT



❧
Majestic
elephant motifs

❧
Suspended
flower accents



Rows of Kasumala and coin motifs flow gracefully into a Lakshmi pendant, guarded by elephants. Paired with matching jhumkas, this Haaram holds the beauty of timeless temple tradition.



O5V32DQ

GREEN GEM NAKSHI NECKLACE



Intricate carvings
on the Kasu

Red stones for
added grace



Intricate Nakshi detailing defines this Geru gold temple necklace, where every curve and motif reflects the finesse of traditional handcraft. At its heart rests a vibrant green gemstone, bringing a festive charm, beautifully complemented by segments of red stones.



W5GKNKJ

FESTIVE NAKSHI TEMPLE NECKLACE



Intricately
handcrafted
central pendant

Hanging
emerald beads



A festive piece of timeless elegance, this temple necklace is distinguished by its intricate Nakshi work, where every floral curve and deity-inspired motif is carefully sculpted. The stones are set with precision to add vibrance and rhythm, while delicate emerald teardrop beads lend graceful movement. At its heart rests an intricately handcrafted central pendant, bringing the design together with depth.



CHOKER
O5VL2BU

HAARAM
O5VL2CI

Kempu Stones

Kempu stones have long been treasured in traditional South Indian jewellery for their vibrance and cultural significance. In these designs, the stones are reimagined with modern styling, set in intricate Nakshi work, temple motifs, and contemporary forms that balance heritage with modern grace. Their deep reds and greens add a festive radiance, making them ideal for weddings, celebrations and special occasions.



O5VL2CE

REGAL ANTIQUE GOLD NECKLACE



Refined artistry
throughout

Red stone
detailing to
accentuate



This regal antique gold necklace reflects timeless craftsmanship, brought to life with vibrant ruby stones that glow with warmth. Each pendant-like panel carries ornate latticework, sculpted textures, and fine detailing.

Rows of rubies are framed with intricate gold scrolls, while delicate bead drops add graceful movement.



O5VL2CA

LAKSHMI KUBERA DEEPAM NECKLACE



Deepam-shaped
detailing

Emerald hues
for a festive look



Inspired by the Lakshmi Kubera Deepam, this necklace reflects temple traditions through intricate Nakshi work and refined texturing. Outlined with radiant emeralds, it glows with the enduring grace of a ceremonial lamp, capturing heritage and timeless artistry.



O5VL2EF

ANNAPAKSHI DEEPAM NECKLACE



Elegant
Deepam-shaped
motifs

Emeralds to add
a festive arch



Rooted in the elegance of Annapakshi Deepam motifs, this necklace celebrates heritage craftsmanship. Each detail is carefully sculpted in Nakshi style, while emerald accents are precisely set, adding vibrant contrast to the intricate gold work.



O5AD2BI

NECKLACE INSPIRED BY HATTU VILAKKU LAMP



Exquisite gold work
on each panel

Statement pendant
in the shape of a
Deepam



The Thattu Vilakku lamp inspires the design of this layered gold necklace. Each strand is crafted with Kasu-like elements and textured beads, linked intricately to create a rhythmic flow.



KUNDAN STEP LAMP NECKLACE



Step lamp motif,
typical of
South India temples

Elaborate
stone-work



This antique gold necklace is inspired by the architectural beauty of South Indian step lamps, where symmetry meets craftsmanship. Kundan stones are carefully set into intricate frameworks, their brilliance offsetting the textured gold that frames them. Each element is sculpted with Nakshi detailing, echoing the steps of the lamp in layered precision.



O5VL2AA

LAKSHMI KUBERA HAARAM



Intricate
Lakshmi Kubera
motif

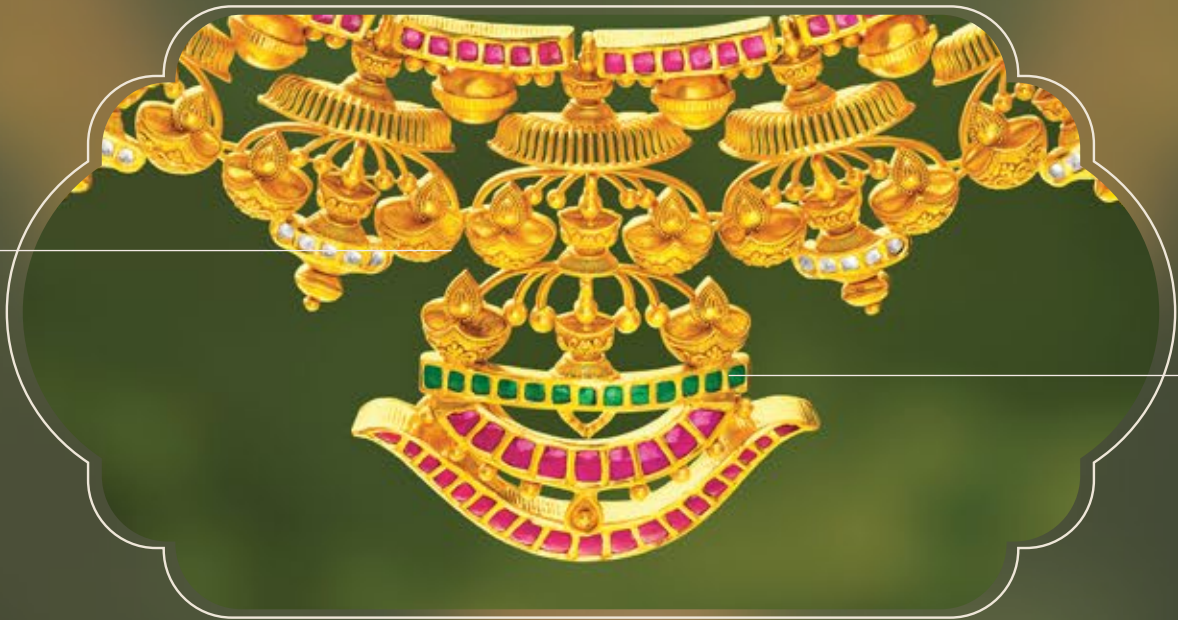
Supporting floral
accents to enhance
the main pendant



Inspired by the Lakshmi Kubera Deepam, this antique gold Haaram is a tribute to intricate craftsmanship. Its long strands are delicately fashioned with embossed coins and Nakshi panels that animate the Lakshmi and Kubera motifs. Each element—from carved deity forms to textured borders and miniature stone accents—is rendered with remarkable finesse.



GRACEFUL LAMP PENDANT NECKLACE



Graceful
miniature Deepam
accentuating
the design

Stone-work in
rubies and emeralds

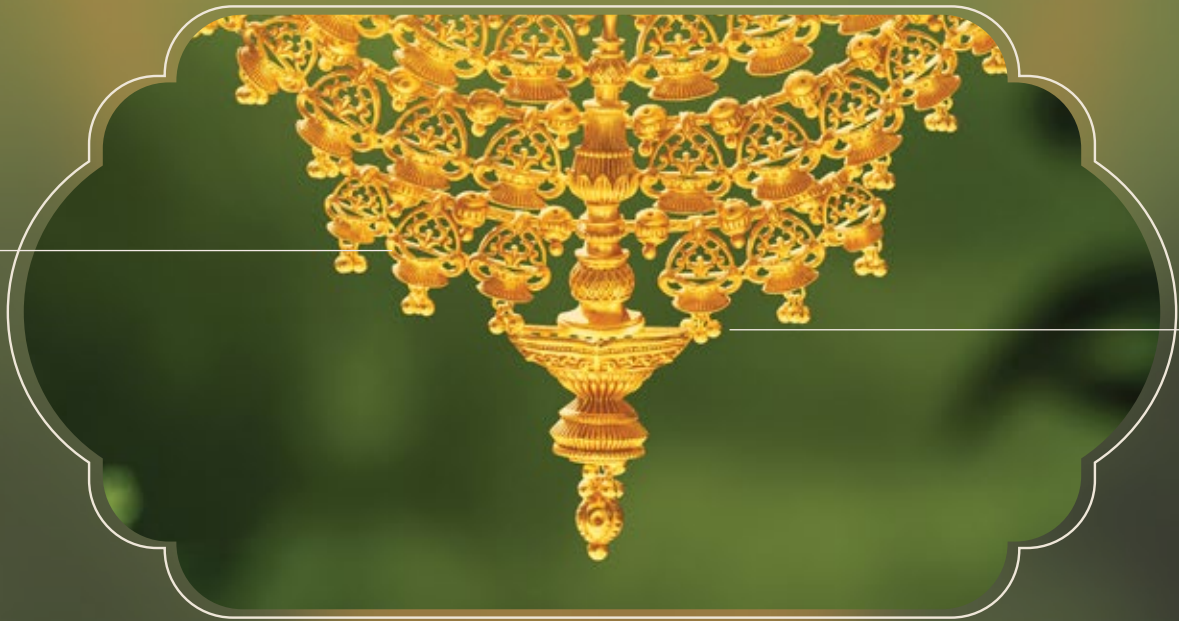


This necklace is anchored by a graceful lamp-inspired pendant, echoing the grace of temple Deepams. The pendant is sculpted with intricate Nakshi detailing, where every curve reflects hours of skilled craftsmanship. Ruby and emerald stones are meticulously set along the outline for added allure.



O5AD2BA

KUTHU VILAKKU GOLD NECKLACE



Intricate
gold jaali-work
lending elegance

Graceful
hanging details for
added charm



Inspired by the iconic Kuthu Vilakku lamps, this multi-layered gold necklace is a luminous ode to temple traditions and artistry. Each strand is meticulously crafted, featuring Kasu-like elements and delicately textured beads strung with rhythmic precision.

For marriages crafted by you



π
TANISHQ
PRESENTS

RIVAĀH
WEDDING JEWELLERY